



Vehicle Solutions



2012

www.lund-industries.com

consoles
computer mounting systems
pole mounting systems
PASS® system

weapon storage
sirens
power distribution
printer mounts

trunk trays
gun racks
vaults
accessories

Product Index

Computer Mounts:

| | |
|--------------------------------|-------------|
| Motorola | Pages 19-20 |
| Data911 | Page 21 |
| Datalux | Page 22 |
| Fujitsu, Kontron, RoboVu | Page 23 |
| Panasonic, Xplore | Page 24 |

Consoles:

| | |
|----------------------------|----------------|
| Horizontal Consoles | Pages 6, 12 |
| Vertical Consoles | Pages 13-14 |
| VH Tactical Consoles | Pages 8, 15-16 |

| | |
|---------------------------|-------------|
| Console Accessories | Pages 17-18 |
|---------------------------|-------------|

| | |
|--------------------------------|---------|
| CT-60 Power Distribution | Page 34 |
|--------------------------------|---------|

| | |
|---|-------------|
| Docking Stations & Laptop Mounts | Pages 25-26 |
|---|-------------|

| | |
|--|--------------|
| Equipment Vaults & Weapon Storage | Pages 10, 32 |
|--|--------------|

| | |
|----------------|---------|
| Flashers | Page 33 |
|----------------|---------|

| | |
|-----------------|-------------|
| Gun Racks | Pages 6, 31 |
|-----------------|-------------|

| | |
|--------------------------------|---------|
| Installation Accessories | Page 35 |
|--------------------------------|---------|

| | |
|-----------------------|--------------|
| Keyboard Mounts | Pages 24, 26 |
|-----------------------|--------------|

| | |
|--|--------------|
| Motion Attachments & Adapter Plates | Pages 26, 28 |
|--|--------------|

| | |
|-------------------------------|------------|
| New & Featured Products | Pages 3-10 |
|-------------------------------|------------|

| | |
|--------------------------------|--------|
| PASS Audio Visual System | Page 7 |
|--------------------------------|--------|

| | |
|---------------------------|---------|
| Poles & Base Plates | Page 27 |
|---------------------------|---------|

| | |
|----------------------|---------|
| Printer Mounts | Page 29 |
|----------------------|---------|

| | |
|------------------------|---------|
| SFGH-100SC Siren | Page 34 |
|------------------------|---------|

| | |
|------------------------------|---------|
| Trunk Mounting Systems | Page 30 |
|------------------------------|---------|

Lund Industries, Inc. is located in Wheeling Illinois, a northwest suburb of Chicago and has specialized in understanding vehicle equipment requirements and solutions for over 30 years. Lund provides you with informed, tested and proven solutions saving you time and money, while providing efficient, trouble free service from your vehicle equipment.

***Our Commitment to You is Service,
Price and Customer Satisfaction.***

Custom Fabrication Services Are Also Available

New Products

2012 Ford Police Interceptor Solutions



VH-FPI Police Interceptor Series Console

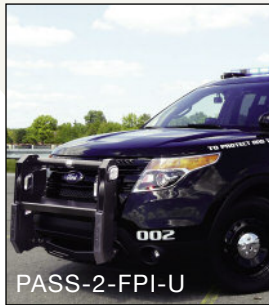
The VH-FPI Series Consoles are designed specifically for the Ford Police Interceptor Vehicles. These VH Tactical consoles feature an 8" vertical section and a 16" horizontal section. The VH-FPI series consoles can accommodate most of the popular options for the VH Tactical line of consoles including HD armrest, pen box, cup holders, fuse panels, power strips and locking storage boxes.

FDRS-PI Fold Down Rear Seat-Back Tray

The FDRS-PI is an innovative equipment mounting solution for the Interceptor sedan trunk. The FDRS-PI is a full width fold down tray that creates a false wall behind the rear seat and provides a convenient and protected mounting area for trunk mounted electronics. The fold down design allows easy access for service in the down position while protecting electronic equipment in the upright position.



PASS® Police Audio-visual Safety System



Our **patent pending** system encloses the siren speakers in the upright of

our bumper system greatly improving ground plane sound in front of your vehicle. **PASS®** solves vehicle speaker mounting issues because the speaker is no longer mounted behind the bumper or fascia. With dual speakers, multiple siren tones can be used independently and lighting options with front and side LED's are available with a wiring harness for easy installation.

SecureStor Gun Rack



SS-GM2-FPI-S & SS-GM2-FPI-U

SecureStor dual gun rack mounts behind the front seat on the hump, secured to the front seat bolts and the rear seat support. The SS-GM2 will hold a variety of shotguns and assault rifles. A charging handle guard prevents charging the weapon while secured. Slots allow flashlight, radio speakers and other equipment to be mounted out of the way.

New Products

2011+ Chevrolet Caprice Solutions

Vehicle Specific Consoles

VH-CAP9-B or VH-CAP16-B

available with 9" or 16" horizontal section

The VH-CAP consoles are designed specifically for the Caprice with floor mounted shifter. The VH-CAP features an 8" vertical section and comes with either a 9" or 16" horizontal section. This console can accommodate most of the popular options for the VH Tactical line of consoles including HD armrest, pen box, cup holders, fuse panels, power strips and locking storage box.

*Includes **CAP-BASE** Caprice base plate*



VH-CAP
w/ 9" horizontal section

VC-CAP with optional CHB-CAP

The VC-CAP console designed specifically for the Caprice with floor mounted shifter, incorporating a front down design for easy access to the shifter. Longer equipment is located towards the rear of the console. This console utilizes the smaller space next to the floor shifter for cup holders or computer pole mounting. Power plugs can be located on the passenger side of the console for easy access.



VC-CAP
w/ optional
CHB-CAP

HC-CAP with optional CHB-CAP

The HC-CAP console designed specifically for the Caprice keeps the console low and close to the floor plate. This console utilizes the smaller space next to the floor shifter for cup holders, power plugs or computer pole mounting. The HC-CAP requires the use of remote and 2 piece police equipment due to the 5" depth of the console. and can accommodate most of the popular options for the VH Tactical line of consoles including HD armrest, pen box, cup holders and locking storage box.



HC-CAP
w/ optional
CHB-CAP

Passenger Side Computer Mounting

FP-CAP11

The FP-CAP11 passenger side base mounts to the factory seat bolts and requires no drilling into the vehicle floor. The mount allows placement of a pole and upper assembly (*sold separately*) close to the console for greater driver comfort and accessibility.



FP-CAP11
shown with
P5-ADJ-M and
ULTP4 universal
laptop mount

New Products

2011+ Chevrolet Caprice Solutions

Trunk Boxes & Trays

SGB-T41 Under Rear Deck Single Shotgun Box

The SGB-T41 is a single shotgun box designed for installation under the package shelf of the Caprice. It provides lockable shotgun storage within easy reach. The T41 is available with a user friendly 3 digit turn to open combination lock or a simple key lock. 42"l x 4"h x 7"d

LGV-T40 Under Rear Deck Weapon Vault

The LGV-T40 is a Weapon Storage Vault designed for installation under the package shelf of the Caprice. It provides lockable storage of an M-4 or shotgun within easy reach. The LGV-T40 comes with a high security electronic combination lock. 40"l x 6"h x 16"d

The SGB-T41 & LGV-T40 are installed off the floor saving space for equipment and leaving full access to the spare.



LGV-T40



SGB-T41

FDRS-CAP Fold Down Rear Seat-Back Tray

The FDRS-CAP is an innovative equipment mounting solution for the Caprice trunk. The FDRS-CAP is a full width fold down tray that creates a false wall behind the rear seat and provides a convenient and protected mounting area for trunk mounted electronics. The fold down design allows easy access for service in the down position while protecting electronic equipment in the upright position. Access to the spare tire is not blocked by the FDRS-CAP installation.



FDRS-CAP



PASS® Police Audio-visual Safety System



PASS-2-CAP

Our *patent pending* system encloses the siren speakers in the upright of our bumper system greatly

improving ground plane sound in front of your vehicle.

PASS® solves vehicle speaker mounting issues because the speaker is no longer mounted behind the bumper or fascia. With dual speakers, multiple siren tones can be used independently and lighting options with front and side LED's are available with a wiring harness for easy installation.

SecureStor Gun Rack



SS-GM2-CAP

SecureStor dual gun rack mounts behind the front seat on the hump, secured to the front seat bolts and the rear seat support. The SS-GM2 will hold a variety of shotguns and assault rifles. A charging handle guard prevents charging the weapon while secured. Slots allow flashlight, radio speakers and other equipment to be mounted out of the way.

New Products

2011 + Dodge Charger Solutions

Vehicle Specific Consoles

VH-CHGR11

2011 Dodge Charger vehicle specific console with 4" vertical and 16" horizontal equipment mounting space. Mounts to OEM vehicle brackets and has computer attachment point. Includes equipment brackets and fill plates.

VC-2613DC11

12" Vertical Console for 2011 Dodge Charger. 7.75" front height with 26 degree front slope and computer attachment point. Includes equipment brackets and fill plates.



VH-CHGR11



VC-2613DC11

Passenger Side Computer Mounting

FP-CHGR11

2011 Charger Passenger side computer mount. Requires pole assembly and motion attachment.



FP-CHGR11

Trunk Trays

RHT-CHGR11

Hinged drop down trunk tray.

ST-1516-DC11

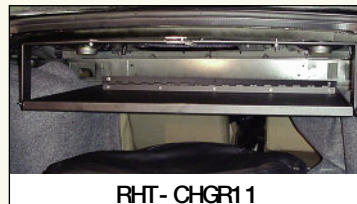
2011 Charger trunk side equipment tray.

CHGR11-SHELF

2011 Charger full width slide-out trunk tray.

CHGR11-TRAY21

21" Charger slide-out trunk tray.



RHT-CHGR11



CHGR11-TRAY-21



ST-1516-DC11

PASS® Police Audio-visual Safety System



PASS-2-CHGR11

Our *patent pending* system encloses the siren speakers in the upright of our bumper system greatly improving ground plane sound

in front of your vehicle. **PASS®** solves vehicle speaker mounting issues because the speaker is no longer mounted behind the bumper or fascia. With dual speakers, multiple siren tones can be used independently and lighting options with front and side LED's are available with a wiring harness for easy installation.

SecureStor Gun Rack



SS-GM2-CH11

SecureStor dual gun rack mounts behind the front seat on the hump, secured to the front seat bolts and the rear seat support. The SS-GM2 will hold a variety of shotguns and assault rifles. A charging handle guard prevents charging the weapon while secured. Slots allow flashlight, radio speakers and other equipment to be mounted out of the way.

New Products

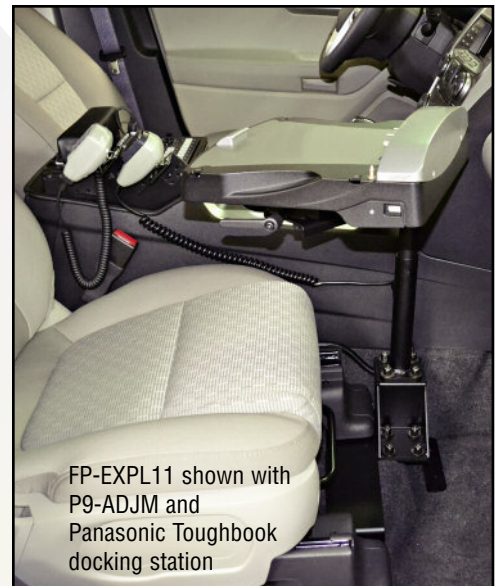


AR-EXPL11 2011 Civilian Explorer Vehicle Specific Console

The Lund AR-EXPL11 console installs by removing the factory armrest and bucket and dropping it in. The console fits right over the factory opening and mounts using factory holes. No moving, modifying or cutting is required. There is space for up to 10" of equipment and accessory mounting. The user friendly design of the AR-EXPL11 eliminates the need to mount equipment in various locations. A padded armrest is an available accessory as well as power plus and fuse panels. Constructed of powdercoated aluminum for structural rigidity, light weight and years of trouble free service, the innovative design of the AR-EXPL11 console provides a clean, functional installation and a finished appearance in 2011 civilian Explorers.

FP-EXPL11

Lund's FP-EXPL11 passenger side base mounts to the factory seat bolts and requires no drilling into the vehicle floor. The mount includes an FP-STEP offset riser which allows placement of the pole and upper assembly closer to the transmission hump for greater driver comfort and accessibility.



FP-EXPL11 shown with P9-ADJM and Panasonic Toughbook docking station

SS-CGM Cage Mounted Gunrack

Lund's SS-CGM Cage mounted gun rack features single or dual weapon mounting and locking for long guns. The unit is designed to quickly and securely attach to most standard public safety vehicle partitions. The SS-CGM features fully adjustable lock and butt cup locations, allowing for specific weapon and vehicle fit. The SS-CGM is constructed of powder coated steel for years of trouble free service and ease of maintenance, providing a clean and functional installation. *Available with or without lock heads.*



New Products **PASS®** Police Audio-visual Safety System



PASS-2-CHGR11

PASS® Police Audio visual Safety System

Our specially designed and **patent pending** system encloses the siren speaker(s) in the upright of our bumper system greatly improving sound on the ground plane in front of your vehicle. **PASS®** solves speaker mounting issues on new vehicles because the speaker is no longer mounted behind the bumper or fascia. With dual speakers, multiple sirens and/or tones can be used independently. Multiple lighting options for front and side LED's are available with an optional wiring harness for easy installation

Currently available for Sedans: Crown Vic, Impala & Charger. SUV's: Expedition Explorer & Tahoe.



PASS-2-CV



PASS-2-IMPL



PASS-2-XL-TAH



PASS-2-XL-EXPED

Featured Products SUV Consoles



HC-EXPL

2006 - newer Ford Explorer vehicle specific console with 14" of equipment space. Includes equipment mounting brackets and fill plates.

Does not require additional mount kit.



HC-ESCP

2006 - newer Ford Escape vehicle specific console with 17" of equipment space. Includes equipment mounting brackets and fill plates.

Does not require additional mount kit.



VH-TAH

2006 - newer Chevy Tahoe vehicle specific console with 12" front height, 60 degree slope and 17" of horizontal and 4" of vertical equipment mounting space. Includes equipment mounting brackets and fill plates. *Does not require additional mount kit.*



HC-HGHD

2006 - newer Toyota Highlander vehicle specific console with 17" of equipment space. Includes equipment mounting brackets and fill plates.

Does not require additional mount kit.

Featured Products

Consoles



VC-TAH

2006 - newer Chevy Tahoe vehicle specific console with 13" of equipment space. Includes equipment mounting brackets and fill plates.

Does not require additional mount kit.



VC-6005

5" Vertical Console with 7" front height and 60 degree slope. Includes equipment mounting brackets and fill plates. *May require base plate or additional mounting kit.*



VC-7506

6" Vertical Console with 8" front height and 75 degree slope. Includes equipment mounting brackets and fill plates.

May require base plate or additional mounting kit.



VC-IMPL

2006 - newer Chevy Impala vehicle specific console with 9" of equipment space. Includes up to 3 sets of equipment mounting brackets and fill plates and a seat bolt mounting bracket.

Does not require additional mount kit.



HC-1600 console with CHB-2EN enclosed cupholder, LSB-400 locking storage box and PB-250 pen box

HC-1600

16" low profile 3.75" high Horizontal Console. Includes up to 3 sets of equipment mounting brackets and fill plates.

May require base plate or additional mounting kit.

Featured Products



SS-LGV-1540

Aluminum weapon storage box features a lift-off lid, ventilation holes, electronic combination lock, easy grip handles and foam liner.

Optional pick-and-pull insert (call for details)

40"W x 15"D x 7"H

also available:

SS-LGV-1636

36"W x 16"D x 7"H



LGV-1540
shown with standard foam insert



Both feature an
electronic combination
lock and lift-off lid



LGV-1636
shown with optional custom insert.



UNV-SASM-**

Universal latching, swing-away tablet or computer display mount for horizontal or vertical series consoles. Display swings open to allow access to AM/FM radio or other dashboard controls behind.

UNV-SASK3-**

Same as above with articulating TG3 keyboard attached.

**** Specify display bracket when ordering.**

Control-Com Consoles

Organize your equipment



VC-2613 Console with Data911 Display and Keyboard Mount

Control-Com Consoles are made of powder coated aluminum for long life, easy cleaning, light weight, and structural rigidity. They are designed to fit between the bucket seats of Chevy Impala and Tahoe, Ford Crown Victoria, Expedition, Explorer, Dodge Charger, Durango and other vehicles without forcing the seats apart. These great looking and functional consoles will accommodate most radios, sirens and switchboxes while meeting the current airbag equipment mounting requirements. Installation of your equipment is quick and easy with our drop-in mounting system.

Side mounting brackets allow more equipment to be mounted in the same space since fill plates are not required.

It also allows equipment to be mounted in a console that is only 7.5" wide, conserving space in the vehicle.

Because Control-Com Consoles are narrower than most other consoles, they provide more room in the vehicle for the officer and don't rub on the seats.

Interchangeable brackets accommodate most equipment and allow for easy access and replacement of components. Knock-outs are provided in several locations for power plug installation.

Lund's In-Dash mounting systems for Ford Crown Victoria allow Data911, Datalux, Fujitsu, Kontron, Motorola MW-810, Panasonic PDR, Polaris, RoboVue and Xplore computers or displays to be mounted in place of the factory radio which can be relocated under the dash with CV-RRLA radio relocate bracket or in the console. The CV-CSMTS series fits in the factory radio slot and features 25° screen tilt, optional swivel up to 12°, installs with no holes or braces in the vehicle, and can be used with or without a console.

Horizontal Consoles

Control-Com Consoles allow integral mounting of Motorola MW-800 & 810, ML900 Laptop, Datalux TX200 & 204, Data911, Polaris, Panasonic CF-18, 27, 28, 29, 30 & PDRC, Xplore iX-104, most laptops and many other computers in your vehicles. Most mounts have tilt and swivel for easy positioning of the computer reducing glare and increasing operator comfort.

Seat bolt mounting kits are available for Ford Crown Victoria, Chevy Impala, Tahoe and Suburban, Dodge Durango and Charger, Ford Explorer and Expedition Plus many others.



LI-900-000

13" Console with computer mount platform, includes up to 3 pairs of equipment brackets and 6 1/4" fill plate (computer mount optional).
25³/₄" L x 7¹/₂" W x 8" H



LI-970-000

17" Console with computer mount platform includes up to 4 pairs of equipment brackets & fill plates (computer mount optional).
29³/₄" L x 7¹/₂" W x 8" H



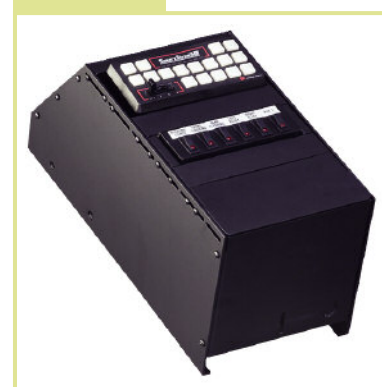
LI-200 Console

9" Console is designed to fit in smaller areas like in front of bench seats or in front of factory consoles. Up to 3 pairs of equipment brackets and fill plates are included and accepts all Control-Com accessories.
14" L x 7¹/₂" W x 8" H



LI-400-000

19" Console includes up to 4 pairs of equipment brackets and fill plates (no computer mount platform).
24" L x 7¹/₂" W x 8" H



LI-900-SPC

13" Console without computer mount platform, includes up to 3 pairs of equipment brackets and fill plates.
17¹/₄" L x 7¹/₂" W x 8" H

Vertical Consoles

The VC-2600, 4500 and 6000 series vertical consoles are designed to place equipment closer to your vehicle's dash and slope down within easy reach of the operator compared to traditional consoles that fit horizontally between the front seats.

Constructed of 11-gauge powder coated aluminum for easy cleaning, light weight, structural rigidity and years of trouble free service. The VC series consoles can be mounted on any vehicle specific base plate to eliminate or reduce drilling during installation.



VC-2613

(shown with Xplore iX-104 in-dash mount)

Vertical Console has a 26° front slope and 12" of equipment mounting, allowing equipment to be mounted conveniently beneath a vehicle's dash.

16³/₄" L x 7¹/₂" W x 9" H

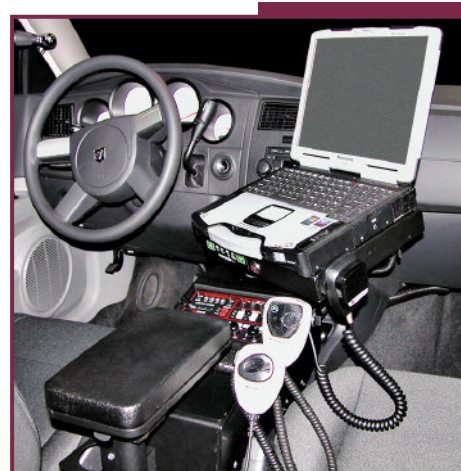


VC-2613NT

(shown with Fujitsu 4210 computer mount)

12" Vertical Console 10" front height with 26 degree front slope and top mount platform. Includes up to 3 sets of equipment brackets and fill plates.

17" L x 7¹/₂" W x 10" H



VC-2613DC

(shown with Panasonic CF-29 Docking Station)

12" Vertical Console for Dodge Charger, 7.75" front height with 26 degree front slope and top mount platform. Includes up to 3 sets of equipment brackets and fill plates.

16³/₄" L x 7¹/₂" W x 7³/₄" H

value



VC-2615

Vertical Console has a 26° front slope and 15" of equipment mounting and is 1" lower for better access with a keyboard attached.

19¹/₂" L x 7¹/₂" W x 8" H



VC-2618

Vertical Console has a 26° front slope and 17" of equipment mounting, allowing equipment to be mounted conveniently up to a vehicle's dash.

21³/₄" L x 7¹/₂" W x 9" H



VC-4508

Vertical Console has a 45° front slope and 8" of equipment mounting. The 4508 is computer mount ready and is designed to be directly mounted to the vehicle's hump or front seat bolts. 12³/₄" L x 7¹/₂" W x 9" H
4500 Series Consoles Require Mounting Kit.

Vertical Consoles



VC-6010 (shown with Fujitsu Lifebook in-dash mount)



VC-6010

Vertical Console has a 60° front slope and 8 1/4" of equipment mounting.
11 1/4" L x 7 1/2" W x 9" H



SWA-HD-TS1

Heavy duty swing arm with 1.25" tilt/swivel for mounting keyboards and computers allows controlled motion at both ends of the arm. available in 6, 8 and 12" lengths.
Accepts all motion attachments



VC-F250

Ford F-250-550 12" Vertical Console with 75 degree slope and 10" of equipment space. Includes equipment mounting brackets, fill plates and mounting kit.



VC-F250 truck console



VCSP-IMP VCSP-CV

Side Panels conceal wiring and connections to the VC series Consoles. *VCSP-CV shown installed on VC-2613 console.*



CV-HSM

Swing open mount for RLS, SmartSiren, CenCom or MPC01 siren control heads. Installs over the Crown Victoria OEM radio location and still allows access to the radio volume control. Latches in place.
A convenient alternative when a console isn't necessary.



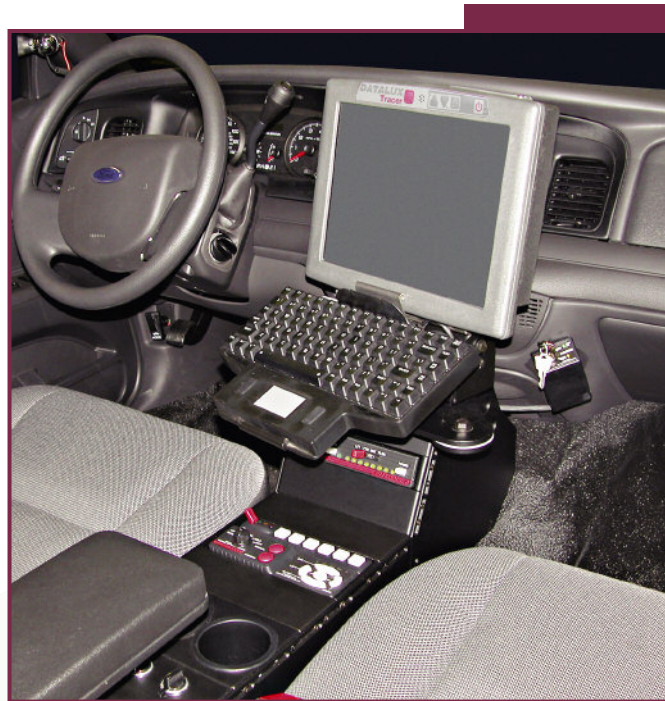
VH Tactical Consoles

VH-6005

5" Vertical Console with 7" front height and 60 degree slope and 3.75" H x 16" L horizontal section. Includes equipment mounting brackets and fill plates.
May require base plate or additional mounting kit.



VH-6005 console in Chevy Impala with Panasonic CF-30



VH-6005 with Datalux Tablet mount and articulating keyboard



VH-6005 console
with 16" articulating TG3 keyboard tray



VH-7506 console with
computer docking station on
SWA-HD-8 and PPJ-HDARM-WF

VH-7506

6" Vertical Console with 8" front height and 75 degree slope and 3.75" H x 16" L horizontal section. Includes equipment mounting brackets and fill plates.
May require base plate or additional mounting kit.



VH Tactical Consoles



VH-CHGR console with Datalux TX200Tablet and keyboard mount

VH-CHGR

Dodge Charger 5" Vertical Console with 7" front height and 60 degree slope and 3.75" H x 16" L horizontal section. Mounts to OEM vehicle brackets and has computer attachment point. Includes equipment mounting brackets and fill plates.



VH-CHGR console installed in 2008 Dodge Charger



VH-CHGR vehicle specific
Dodge Charger console

versatile



VH-6005S *New Part*

5" Vertical console with 7" front height and 60 degree slope and 3.75" high 9" Horizontal section. Includes equipment mounting brackets and fill plates.

May require base plate or additional mounting kit.

Console Accessories



Optional equipment includes cupholders, padded armrest, power plugs, Osram K-30, Littlelite LF12-TRB and LF12-TS-LED reading lamps, multi-position microphone holder and 12-position fuse panel available with or without quick-release cover.



ARMP Armrest and ARM-CL

Fully Padded Armrest or 1/2 Padded Armrest with microphone clip with 2" to 5" adjustable bracket permits setting the desired armrest height on console.



HD-ARM-5 HD-ARM-9

Heavy duty armrest with molded poly pad, and multi-position 5" or 9" adjustable pole. Armrest flips up for access to equipment and slides forward or back for correct pad positioning. Requires base plate.

G3-DVR D911-DVR

Console mounting brackets for the Kustom Signal G3 and Data911 Digital Video Recorders. Call for additional DVR mounts.



value



SCN-SPT

Side mount adjustable screen support for laptops.

SCN-SPT2

Bottom mount adjustable screen support for laptops. Both provide ideal screen support for rugged driving conditions.



CHB-2EN CHB-2 CHB-1

SPM-1 Cupholders

Single, double and adjustable cupholders mount to a variety of surfaces and the rear or inside of Control-Com consoles. Open design allows for easy cleaning and mounting. SPM-1 adjusts from a small 8 oz. coffee cup to fit most big gulps.

CC12-CFP CC12-FP

12 position ATO fuse panel. The panel comes with nine 20 amp and three 30 amp capacity fuse holders. Available with or without cover.



FB-6

6-position fuse block with single power feed has 150 amp capacity (25 amps per circuit), using ATO type fuses. Can be positioned in any convenient protected location with integral mounting bracket.

HAT-24M (2" - 4") HAT-35 (3" - 5") HAT-47 (4" - 7")

Adjustable base mount for tilt / swivel which can be used to mount computers, keyboards, etc. instead of pole assemblies on consoles and base plates.



Accessories



PS2-4

PS2-3

3 and 4 position power strips feature 15 amp heavy duty receptacles with caps that prevent contamination when not in use.



SP2-2

SP2-3

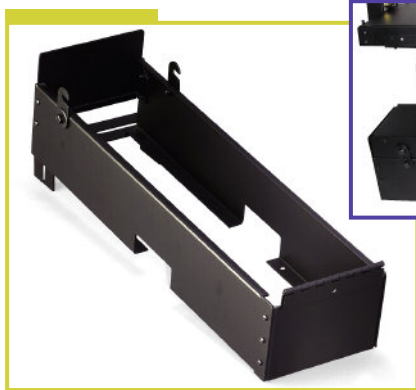
2 and 3 position 15 amp rocker switches on a 2 inch Control-Com console fill plate.



PB-2500 *New Part*
Pen Box 2.5" L x 2" D

LSB-400 *New Part*
Locking Storage Box 4" L x 3.5" D

LSB-600
Locking Storage Box 6" L x 5" D



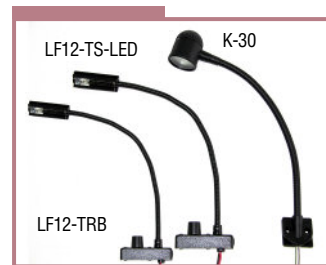
EXT-BASE *Inset: LI-900-00 Console on EXT-BASE*

Hinged console riser allows 900 Series 13" Consoles to be raised 5" accommodating higher seats in larger vehicles. Rear hinge and latch design allows easy access to wiring and equipment when the console is raised. Fits any base plate, flat floor or hump. *Works with all Control-Com accessories.*



Osram K-30
LittleLite LF12-TRB •
LF12-TS-LED

LED and halogen gooseneck lamps provide interior lighting for reading and report writing. Available with dimmer or switch.



CLPBD

Clipboard Holder
9.5" W x 2.5" D

NTEPD

Notepad Holder
7.5" W x 2.5" D



LF-BKT

LittleLite Side
Mounting Bracket.



LL-BKT2

LittleLite Bottom Mounting
Bracket for consoles and docks.



BCR-CLP

Spring Steel Bar Code Scanner
Clip with poly sleeves.



A-BASE

Adjustable console
riser allows 900 series
13" Consoles to be
raised in several
increments up to 3"
accommodating higher
vehicle seats or longer
equipment. Console
can be installed level or

on an angle and used with standard
mounting kits. *Works with all
Control-Com accessories.*

Computer Mounts

Motorola

Lund's clamshell computer mounting systems allow the display to be raised or lowered for easy access to the vehicle dashboard controls.

The screen-clamping lever allows a wide range of display adjustment insuring operator comfort in many viewing conditions. A quick-release spring clip enables the keyboard to be removed for typing. The mount system has adjustable tilt and swivel to accommodate many vehicle and operator situations. Lund clamshell style mounts are made of 9 and 11 gauge steel and have a durable powder coating for long life and ease of cleaning. These mounts are available in many variations and configurations to fit your existing console or application.



MW-810-MT

Clamshell mounting system for the Motorola MW-800 & 810 computer keyboard and display. The mount features locking adjustable screen and keyboard tilt plus a quick-release spring clip for easy keyboard insertion and removal.

MW-810-FMT2S

MW-800 & 810 display mount with locking tilt and swivel for mounting on horizontal and some vertical surfaces. *Also available for MW-520.*



Rugged



MW-810-LMT2

Designed to mount up to 3" lower than standard mount on engine covers and dashboards. The MW-810-LMT features articulating arms which put the display behind the keyboard with keyboard tray on ZB-56 swivel base.



CV-CSMTS-M810

In-dash tilt and swivel mounting system for Crown Victoria allows the Motorola MW-800 & 810 display to be mounted in place of the factory radio which can be relocated under the dash with CV-RRLA radio relocate bracket or in a Control-Com Console. The CV-CSMTS-M810 installs easily in the factory radio slot with no cutting or drilling. Its unique sandwich design provides substantially more strength, securely mounting your screen where you need it. The CV-CSMTS-M810 features 25° locking screen tilt and 12° locking swivel.



Computer Mounts

Motorola

MW-BASE-800

Enables mounting the CPU or other equipment under the keyboard and display of the MW-800 or 520 computer system. This unit replaces HAT or Pole brackets, adjusts from 4.5" to 7.5" in height, integrates onto Control-Corn Consoles and can be used with any standard computer mount.



MW-ZPAB

Adaptor bracket for mounting the Zebra PRBKT-RW420 mobile printer on the back of the MW-800 & 810 display.



MW-800-TB

Trunion bracket for mounting the MW-800 CPU to poles, PM-CPU or bases.



MW-810-RM

New Part

MW-800 & 810 display mount for overhead mounting with locking tilt/swivel.



MW-810-KBD

MW-800 & 810 stand alone keyboard tray with quick-release spring clip. *Requires TS-1 or TS-60*



MW-810-MKB

MW-800 & 810 display mount with keyboard caddy mounted behind screen and featuring a quick-release spring clip. Unit features locking tilt and swivel and is designed for horizontal surfaces.



MW-KBX and TG3-KBX

Foam padded keyboard box with strap. *Available for TG3 or Motorola MW-520 and MW-800 Keyboards.*



CV-CSMTS-D911

In-dash tilt and swivel mounting system for Crown Victoria allows the Data 911 display to be mounted in place of the factory radio which can

then be relocated under the dash with CV-RRLA radio relocate bracket or in a Control-Com console. The mount installs easily in the factory radio slot with no cutting or drilling. Its unique sandwich design provides substantially more strength, securely mounting your screen where you need it. The CV-CSMTS-D911 features 25° locking screen tilt and 12° locking swivel.

D911-MKB

Data911 display mount with spring loaded TG3 keyboard tray mounted behind the screen. Unit features locking tilt and swivel and is designed for horizontal surface mounting.



D911-MT

Mount system for Data911 computers feature adjustable locking screen and keyboard tilt. Spring loaded TG3 keyboard tray allows for easy insertion, removal, use and operator convenience.

Mounts to any motion attachment or assembly.



D911-SM-KBD and D911-SM

Shown installed on page 7.

Mount system for Data911 display with locking display tilt and swivel. 16" articulating arm with TS-1 tilt / swivel for keyboard attachment. For VC Series consoles and horizontal surfaces.

D911-SM available as a display mount only.



D911-MT15

Mount system for Data911 15" display features adjustable locking screen and keyboard tilt. Spring loaded TG3 keyboard tray allows for easy insertion, removal, use and operator convenience.

Mounts to any motion attachment or assembly.

D911-MT2S

Data911 display mount with locking tilt and swivel for mounting on horizontal and some vertical surfaces.



Computer Mounts

Datalux



DL-TX204-MTU

Clamshell mounting system for the Datalux TX-200 & 204 Tracer tablet features locking adjustable screen tilt, keyboard tilt, swivel and display latch for quick release. Spring loaded keyboard snaps into clip for easy insertion, removal, use and operator convenience. *Mounts to any motion attachment or assembly.*



DL-TX-SM-KBD and DL-TX-SM

Shown installed on page 11.

Mount system for Datalux TX-200 & 204 Tracer tablet with locking display tilt and swivel. 16" articulating arm with Datalux keyboard clip mounted on a TS-1 tilt / swivel. For VC Series consoles and horizontal surfaces.

DL-TX-SM available as a display mount only.



CV-CSMTS-DL

In-dash tilt and swivel mounting system for Crown Victoria allows the Datalux TX-200 computer to be installed in place of the factory radio. The mount installs easily with no cutting or drilling. Its unique design provides substantially more strength, securely mounting your computer where you need it. The CV-CSMTS-DL features 25° locking screen tilt and 12° locking swivel.



VC-DL-KBDA

16" articulating keyboard tray for Datalux Clip-on keyboard.



DL-KBD-CLP

Quick release Datalux keyboard clip attaches to any motion attachment or keyboard base.



DL-TRCAD

Adapts Datalux Tracer to new-style TX-200 mounting system.



DL-TX200-MT2S

Datalux TX-200 display mount with locking tilt and swivel for horizontal and some vertical surfaces.



DL-TXAD

Adapts the Datalux TX-200 computer to old-style Tracer mounting systems.

Computer Mounts

Fujitsu, Kontron & RoboVu



CV-CSMTS-FUJ50 *New Part*

Shown installed on page 10.

In-dash tilt and swivel mounting system for Crown Victoria allows the Fujitsu 5010 Series computers to be mounted in place of the factory radio which can be relocated under the dash with CV-RRLA radio relocate bracket or in a Control-Com console. The mount installs easily in the factory radio slot with no cutting or drilling. Its unique design provides substantially more strength, securely mounting your screen where you need it.

The CV-CSMTS-FUJ50 features wing turn latch with key lock, 25° locking screen tilt and 12° locking swivel.



FUJ50-MT *New Part*

Shown installed on page 9.

Clamshell mounting system for the Fujitsu 5010 Series computers features wing turn latch with key lock. The mount incorporates locking adjustable screen tilt for operator convenience, and a quick-release spring loaded TG3 keyboard tray which allows for easy insertion and removal of the keyboard.

Mounts to any motion attachment or assembly



CV-CSMTS-RV

In-dash tilt and swivel mounting system for JLT computer. The mount installs easily with no cutting or drilling. Its unique design provides substantially more strength, securely mounting your screen where you need it. The CV-CSMTS-RV features 25° locking screen tilt and 12° locking swivel.



ROBV-MT

Clamshell computer mount for JLT and other displays or computers with 75 mm Vesa bolt pattern. The mount incorporates locking adjustable screen tilt for operator convenience, and a quick-release spring loaded TG3 keyboard tray which allows for easy insertion, removal, use and operator convenience. *Mounts to any motion attachment or assembly*



CV-CSMTS-KT

In-dash tilt and swivel mounting system for Crown Victoria allows the Kontron 12" display to be installed in place of the factory radio. The mount installs easily with no cutting or drilling. Its unique design provides substantially more strength, securely mounting your screen where you need it. The CV-CSMTS-KT features 25° locking screen tilt and 12° locking swivel.



KONT-MT

Pull-pin adjustable, four position mount for Kontron display with side spring loaded quick-release TG3 keyboard tray. Which allows for easy insertion and removal of the keyboard. *Mounts to any motion attachment or assembly*



Computer Mounts

Panasonic, & Xplore



PDRC-MKB

New Part

PDRC 12.1" display mount with spring loaded keyboard tray mounted behind the screen. Unit features locking tilt and swivel.



UNV-SASM-**

Universal latching, swing-away tablet or computer display mount for horizontal or vertical series consoles. Display swings open to allow access to AM/FM radio or other dashboard controls behind.

UNV-SASK3-**

Same as above with articulating TG3 keyboard attached.

****Specify display bracket when ordering.**



IX-SM-KBD and IX-SM

Mount system for Xplore iX-104 tablet with locking display tilt and swivel.

16" articulating arm with TG3 keyboard tray on a TS-1 tilt / swivel.

For VC Series consoles and horizontal surfaces.

IX-SM available as a display mount only.

iX-104 Docking Cradle not included.



IX-104-MT

Clamshell Mount for Xplore iX-104 tablet with locking adjustable screen tilt for operator convenience, and a quick release spring loaded TG3 keyboard tray which allows for easy insertion, removal, use and operator convenience. *Mounts to any motion attachment or assembly. iX-104 Docking Cradle not included.*

PDRC-MT

Mounting system for the 12.1" Panasonic PDRC features adjustable screen and keyboard tilt. Spring loaded keyboard tray allows for easy keyboard insertion, removal, ease of use and operator convenience. *Mounts to any motion attachment or assembly.*



CV-CSMTS-XP

Shown installed on page 9.

In-dash tilt and swivel mounting system for Crown Victoria allows Xplore iX-104 and GII Dock displays to be mounted in place of the factory radio. Its unique design provides substantially more strength, securely mounting your screen where you need it.

The CV-CSMTS-XP features locking 25° screen tilt and 12° swivel.

iX-104 Docking Cradle not included.



XP-DDM-iX

Desk and Wall mount for the Xplore iX-104 and GII Docking stations allows 90° locking tilt and a work area under the tablet. Holes in the base enable vertical surface mounting applications.

iX-104 Docking Cradle not included.



Computer Mounts & Docking Stations

CF30 TuffDock

The CF30 TuffDock was designed specifically to maximize the power of the Panasonic CF30 Toughbook. By leveraging the knowledge learned from over 50,000 installed units, LEDCO improved upon the original CF29 TuffDock design, and successfully blended refinement, functionality and durability. Tested to 70 G's - Best in Class



CF29X TuffDock

The CF29X TuffDock is compatible with all models of the CF30 as well as older CF29 and CF28 Toughbooks.

Spring loaded connector head

maintains connectivity with computer. Modular upgrades allow for growth based on IT needs and designed with high security locking system minimizing the threat of theft.

CF29X Port Replication:

Speaker: Stereo (1), Mic: Stereo (1)

USB: Fully-Powered USB 2.0 (up to 3) and (optional) Ethernet

Antenna: Single or Dual Hi-Gain (optional), Noise and EMI Filtering

Power Conversion: (12-16V), (12-5V), Input Voltage: 12V DC

Tested to 70 G's - Best in Class

Compatible with any Panasonic CF28, CF29 and CF30 Toughbooks

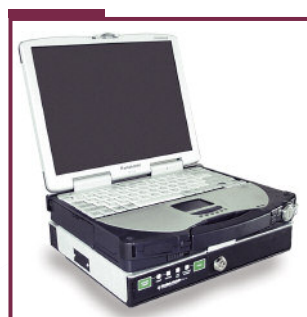
CF18X and CF19 TuffDock

The CF18X TuffDock provides the ultimate in mobile computing performance. A combination of Panasonic electronics, tough uni-body steel core, and rounded high-tech polymer rails provide the safety, durability and ergonomics you expect from a LEDCO product. Constant connectivity is maintained with a guided, floating dock head and LED indicator light keeping the user informed of the docks status. Uniquely engineered to be fully functional as both a tablet and laptop. These features, combined with LEDCO's market-leading quality, connectivity and ruggedness, create the industry's best Panasonic CF18 Toughbook docking solution. Tested to 24 G's.



CF-29DS Docking Station

Constructed of welded steel and featuring an internal port replicator and internal "intelligent" power management circuitry. All functions can be controlled and monitored at the front tactile membrane control panel. Surge suppression, avalanche voltage protection, reverse voltage protection, emi filtering, transient voltage protection, low voltage monitoring, auto activation and shutdown, user controlled timed shutdown are all standard on this unit. The dock ships with firmware that allows the user to control power management features.



MAG-CF27, 28, 29 & 30

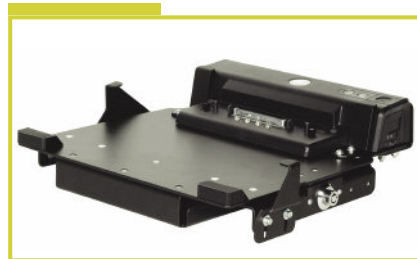
The new magnesium CF-29 and CF-30 docking stations from Gamber-Johnson use a unique push-pull docking handle and floating connector that reduce docking alignment problems. Once the docking connector slides into position, the unit can be used locked or unlocked. They utilize front retainer clips for more security and all computer ports are replicated. The CF-30 requires an external power supply while the CF-29 has a regulated internal power supply with voltage and EMI protection.



DC-ATG

The DC-ATG Docking Cradle for Dell 620, 630, and ATG attaches to the D/Port Advanced Port Replicator (sold separately) to make a complete mobile docking station. Push button latch allows for easy computer insertion and removal. Adjustable side hold-down clips along with the front and rear support brackets secure computer and port replicator in the cradle keeping equipment safe. Built-in key lock helps deter laptop theft. Rugged aluminum construction for light weight and durability. Black powder coat finish for maximum corrosion resistance.

DC-CF52 Docking cradle for Panasonic CF52 also available.



Computer Mounts & Docking Stations



ULTP4 and ULTP4-XL

Universal Laptop mounts that can be used in place of a dedicated docking station. The ULTP4 is designed to hold laptop computers up to 13.4" wide, 12.6" deep and 2.4" thick with screen open, ULTP4-XL 16.4 wide x 12.6 deep x 2.4" thick. The units feature a wing turn side latch with built-in key lock for easy insertion and removal of the computer and "one size fits all" hold down clips allow easy adjustment and fit. The ULTP4 and ULTP4-XL comes with adjustable tilt / swivel and fits any pole, HAT adapter or mount assembly.



APM-KBAD

New Part

Adjustable pole mount keyboard adapter attaches to a pole bottom using a height adjustable collar that interfaces with keyboards and printer mounts allowing independent and articulated motion separate from the pole upper. *Shown with Data911 display mount and TG3 keyboard*



LKP-FKB3

Universal 9" to 13" adjustable floor mount keyboard pole with articulating arm, tilt / swivel and TG3 keyboard tray. Pre-punched for Ford Crown Victoria. *Also available with universal keyboard tray.*

LKP-FAR

Same as above without keyboard tray. *Accepts all motion attachments.*



LKP-SKB

Vertical surface 9" to 13" adjustable keyboard pole with articulating arm, TS-1 tilt/swivel and universal

keyboard tray. *Also available with TG3 keyboard tray.*

LKP-SAR

Same as above without keyboard tray. *Accepts all motion attachments.*

Laptop Mounting Stations

Laptop specific mounting stations are constructed of 18 and 10 ga. steel and are black powder coated. Optional shock isolators dampen vibration and reduce the possibility of damage to the computer's hard drive. A key lock provides security against unauthorized removal. Mounting stations do not typically block any computer ports or bays. Optional power supply attaches to the bottom and screen support to the side of the mount. *Available for Panasonic CF-18, 19, 28, 29, 30, 52, & 74 Itronix GoBook II, III & Tablet / DuoTouch and Dell Latitude D410, D510, D610 and D620.*



ZB-56



VESA-AP



ML900-LAP



LEDAP

ZB-56 Low Profile Base

1" high top mount swivel base assembly. *Accepts all computer mounts.*

VESA-AP

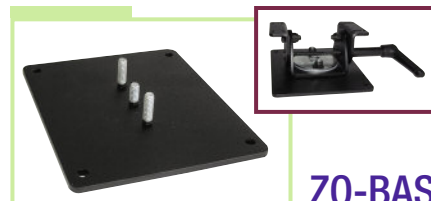
VESA 75 mm to 4" x 2" bolt pattern adapter aluminum plate.

ML900-LAP

Motorola ML-900 Dock to 4" x 2" bolt pattern adapter plate.

LEDAP

LEDCO to 4" x 2" bolt pattern adapter plate.



ZO-BASE

5" x 5" Flat base allows low profile mounting with TS-60 or 90 tilt / swivel. *Inset: ZO-BASE with TS-60.*

Mounting Systems

Poles and Base Plates

Vehicle Bases:

Base plate kits are available for many other vehicles, see price pages or website for current listing.



DC-BASE

2006-10 Charger 7 ga. steel tunnel base plate with mounting feet.



IMP06-BASE

2006-10 Impala 7 ga. steel tunnel base plate with mounting feet.



Tunnel Base Plates BASE-S,M,L

7 ga. steel tunnel plate with universal slots and pre-drilled side holes allows front to rear placement flexibility. Available in 16" (S), 22" (M), 28.5" (L) lengths and with different vehicle leg kits. *Please see price guide for vehicle applications.*

Poles

P5 5" to 8" adjustable pole with standard upper mounts to vehicle base plates

P9 9" to 14" adjustable pole with standard upper mounts to vehicle base plates

P12 12" to 16" adjustable pole with standard upper mounts to vehicle base plates

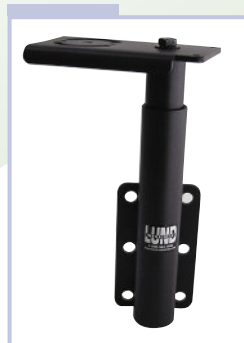
P5-WF & P9-WF 5" to 8" and 9" to 14" poles with a wide 5" x 5" universal flange for mounting to most manufacturers base plates including Lund, Gamber-Johnson, Troy and Jotto-Desk.



Pole Mount Assemblies

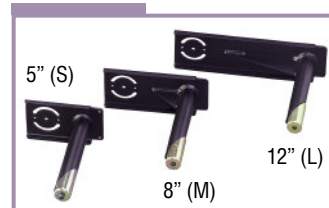
FP-53

Vertical surface mount with adjustable standard upper (9" to 14").



VMP-8-S

Small flange 8" vertical surface pole mount with standard upper.



UPR- Uppers available in 5" (S), 8" (M), 12" (L) with or without quick adjust handle.



FP-52-ADJ-L

Heavy duty flat floor base with welded gussets 18.5" to 24" high. Available with multi-position quick adjust upper allows mounting in vans or trucks with high seats. Operator can select left / right rotation while the collar sets height.



FP-57-ADJ-M

Flat floor base 14.5" to 19.5" high available with multi-position quick adjust 8" upper allows mounting in vans or trucks with high seats. Operator can select left / right rotation while the collar sets height.

FP-59-ADJ-M

for Crown Victoria

FP-IMP-ADJ-M for Impala

Passenger side mount attaches to seat bolts and does not interfere with factory consoles or passenger leg room. Optional multi-position adjustable upper allows the operator to select left / right rotation while the collar sets height.

Passenger Side mounts are available for many other vehicles, see price pages or website for current listing.



Mounting Systems

Motion Attachments and Keyboard Trays



FP-55

Offset Hump Mount for any vehicle with a transmission hump. Accepts any Pole or HAT bracket.



FP-STEP

3 1/2" x 4" Universal offset mounting step for poles. Moves poles closer to center of vehicle.

PM-KBAD2 • PM-KBAD3



Pole Mount KBAD2 6" or KBAD3 9" heavy duty adapter platform for keyboards, printers or equipment mounting brackets. Secured to pole with 2 clamps.



IKEY-KBD

New Part and

TG3-KBD

Spring loaded tray designed to hold I-KEY or TG3 keyboards with glide point. Pulls forward for easy insertion and removal. Attaches to any motion device, articulating slide arm, Pole or HAT bracket.



UKBD

Universal Keyboard tray fits virtually any keyboard and attaches to any motion device, articulating slide arm, Pole or HAT bracket. Tilt and swivel allows the operator to position the keyboard for easy access and viewing. Adjustable from 10.5" to 16" wide and 6.5" to 9" deep the UKBD accepts keyboards up to 2" thick. Spring-loaded tray allows easy insertion and removal of the keyboard.

Motion Attachments

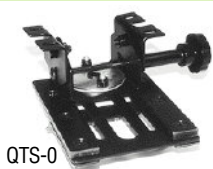
Tilt and swivel adapters fit any Pole, HAT adapter or mount assembly and all swivel 60° left / 60° right.

TS-60 tilts 30° down, 30° up and is 2.5" high. TS-90 has adjustable tilt in three ranges between 90° down, 120° up

and is 3.25" high. TS-1 tilts 25° down and is only 1.25" high. QTS-0 Quad motion tilts / swivels, slides 4" and moves at both ends.



TS-60
TS-90



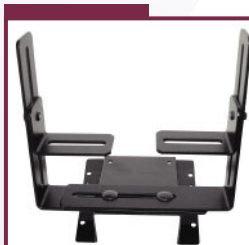
QTS-0



TS-1

FP-212

Short Stack radio mount fits under dash or on any flat surface. The angled base plate allows equipment to be placed for optimal access. Equipment brackets are adjustable.



PM-CPU • PM-CPU2

Pole Mount CPU platform for use with the MW-520, 800 (with trunion bracket) or other equipment allows horizontal or vertical positioning of the CPU anywhere on the pole. The unit attaches to any pole with 2 clamps.



RW-TSMT

(Shown with TS-60)

Rear Wall Mount telescopes from 17" to 23" and features adjustable 180° swing with lock and tilt / swivel. Attaches to any motion device.

BRACE2

Adjustable 10" - 16" support brace reduces mounting system vibration. Attaches to pole with clamp assembly and console, floor or dash on opposite end.

BRACE3 Same as above, with 3 section adjustable from 16" - 34".



Printer Mounts



PRBKT-RW420

Printer bracket securely mounts the Zebra RW-420 mobile printer in your vehicle. Locking quick-release spring mechanism mounts to any Lund motion attachment or assembly. Vinyl bumpers protect printer. Compact design provides access to charging port and weighs only 1.5 lbs. Made of black powder coated 14 ga. steel. Dimensions: 7.0" L x 6.0" W x 2.375" H



PPJ-CASE

PPJ-CASE

Designed for Pentax PocketJet mobile printers, it utilizes roll or cut-sheet paper

depending on user preference. Roll paper is protected from prolonged exposure to direct sunlight. The "Fast Release" design allows rapid docking and un-docking of the printer for use outside the vehicle. This compact case may be mounted inside the glove box of many vehicles or used in pedestal or console configurations.

PJ-CASE-AP

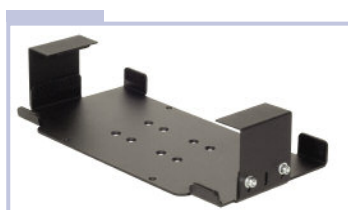
Same as above with armrest pad.



PPJ-CASE-AP

PRBKT-E250 *New Part*

E-SEEK 250 bar code scanner bracket



PRBKT-HP460

PRBKT-HP450

HP printer mounts for model HP460 / HP450. Printer mount can be mounted to any Lund motion attachment with PRIF-BRKT interface bracket. Light weight powder coated steel construction weighs only 2.0 lbs. Dimensions: 14.75" L x 7.25" W x 3.62" H



PPJ-HDARM-WF

PPJ-HDARM-WF

Armrest mount for Pentax PocketJet printer on a 5"- 8" adjustable wide flange pole mounts directly to base plate. Pull-pin latching cover lifts for easy printer and paper access plus paper roller allows simple lift out paper changing. Molded poly armrest pad flips up for easy access to equipment. Constructed of 14 ga. powder coated steel. Dimensions: 10.5" L x 6.0" W x 4.25" H



PPJ-HDARM-VP

PPJ-HDARM-VP

Same as above with a 5"- 8" adjustable vertical pole which mounts directly to rear of console or vertical surface.



CV-PPJ-GB *New Part*

Designed to securely mount the Pentax PocketJet mobile printer in the Ford Crown Victoria glove box. The 16" articulating arm allows the printer to pull out for easy access and to be folded and stored within the closed glove box.



PRBKT-EP590

Designed to securely mount Epson 590 printers vertically or horizontally in your vehicle, it features a bale bracket to hold printer in place, and an adjustable paper guide with form feeder. *Mounts to any motion attachment or assembly.*

PRBKT-I70

Cannon I70 / I80 printer mount. Printer mount can be used with or without an optional battery pack. Black powder coated steel construction weighs only 2.14 lbs. Dimensions: 12.25" L x 7" to 8.78" W x .25" H



PRIF-BRKT

Printer mount interface bracket to TS-60 or motion attachment.

Trunk Mounting Systems

CCV-TRAY-21, 25

21" or 25" x 16" powder coated 14 gauge steel equipment tray for Crown Victoria attaches to pre-drilled holes in the trunk. Tray glides on wear-resistant UHMW polyethylene and features a snap pin with lanyard to lock the tray in place. Trays are available in 21" which extends to the trunk well and 25", both are interchangeable. Heavy duty frame construction assures long life and a stable equipment platform.

UNI-TRAY-21, 25

Universal 21" or 25" x 16" slide out trunk tray for 2006 Impala and many other vehicles with rear deck mounting space available.

CCV-PAN-24-14

Additional 24" x 14" shelf and bracket kit attaches to CCV-TRAY-25. Top tray is adjustable from 3" - 5" in height to allow for variations in equipment.



CCV-TRAY2

Adjustable double 21" x 16" powder coated steel equipment tray for Crown Victoria attaches to pre-drilled holes in the trunk. Trays glide on wear-resistant UHMW polyethylene and feature snap pins with lanyard to lock the tray in place. Top tray frame height is adjustable, allowing for variations in equipment size. Heavy duty frame construction assures long life and a stable equipment platform.



RHT-3420

34" x 23" hinged equipment mounting tray for the Chevrolet Impala is constructed of 14 gauge steel with

welded corner seams for strength, and powder coated for long life and easy cleaning. The bale bracket mount system permits easy installation and adjustment of the tray height from 6" to 11". Loosen a wing nut on each side and the tray drops down for easy access to your equipment.

CCV-SHELF 1•2 IMP-SHELF

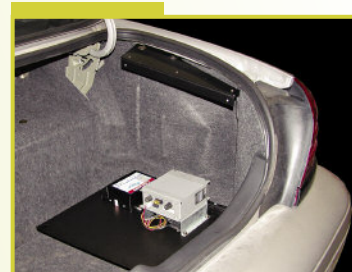
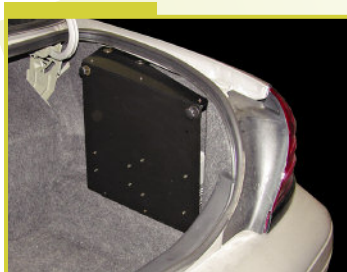
Powder coated steel shelf for the Crown Victoria (24"x14") or Impala (24"x 30") attaches to pre-drilled holes in the trunk. Tray glides on extendible ball bearing slides and features a



snap pin with lanyard for safety. *Available in one and two shelf units depending on vehicle.*

- ST-1718-DC11 for 2011 Charger
- ST-1516-DC for 2006 - 10 Charger
- ST-1516-IM6 for 2006 and newer Impala
- ST-1516C for Crown Victoria
- ST-1516I for Impala 2005 and older

15" x 16" Side Hinged Mounting Tray for the Impala and Crown Victoria. The solution for small equipment mounting is Lund's side mounting tray which allows complete access to the trunk. The tray is made from 1/8" aluminum for strength and mounts in either the right or left quarter panel area in front of the taillight assembly. The unit is designed for quick and easy installation with a special no hole top bracket. When the tray is secured, it fits in an area not normally "equipment friendly".



Gun Racks *SecureStor Gun Racks*



SS-CGM *New Part*

Lund's SS-CGM Cage mounted gun rack features single or dual weapon mounting and locking for long guns. The unit is designed to quickly and securely attach to most standard public safety vehicle partitions. The SS-CGM features fully adjustable lock and butt cup locations, allowing for specific weapon and vehicle fit. The SS-CGM is constructed of powder coated steel for years of trouble free service and ease of maintenance, providing a clean and functional installation.
Available with or without lock heads.



SS-FSGM2

SS-GM2 & SS-FSGM2

SecureStor SS-GM2 rear seat dual gun rack mounts behind the front seat on the hump and is secured to the front seat bolts and the rear seat support

SS-GM2

member. The SS-FSGM2 mounts to a flat vehicle floor. Both will hold a variety of shotguns and assault rifles with their adjustability and ease of installation. A charging handle guard prevents charging the weapon while secured. Slots on the bracket allow flashlight, radio speakers and other equipment to be mounted out of the way.
Available with or without gun locks.

SS-GM2-CH
SS-GM2-CV
SS-GM2-EXPD
SS-GM2-EXPL
SS-GM2-F150
SS-GM2-IMP
SS-GM2-TAH
SS-GM2-SIL

Dodge Charger behind the seat dual gunrack
Ford Crown Vic behind the seat dual gunrack
Ford Expedition behind the seat dual gunrack
Ford Explorer behind the seat dual gunrack
Ford F-150 Quad Cab behind the seat dual gunrack
Chevy Impala behind the seat dual gunrack
Chevy Tahoe behind the seat dual gunrack
Chevy 1500 Quad Cab behind the seat dual gunrack

Equipment Vaults *SecureStor* Vaults



SSTB-SUB-3R



SSTB-EXPD



SSTB-EXPD-EL installed in Ford Expedition EL

SecureStor heavy duty steel SUV vaults are fully carpeted to protect your equipment and feature a 8.5" high drawer on heavy duty full extension slides rated to 250 lbs. Dual handles make sliding the drawer easy, and side perforations allow air to circulate keeping out condensation. The units are available with a high security Simplex combination lock or dual "T" handle locks. **SecureStor** vaults are powder coated for long life and easy clean-up and are available to fit Ford Explorer, Expedition and Chevy Suburban/Tahoe, Trailblazer and many other vehicles

SSTB-SUB-3R: 22" D x 44" W x 23" H (w/ 3" Lip) **SSTB-EXPD:** 35" D x 44" W x 12" H **SSTB-EXPD-EL:** 52" D x 47" W x 12" H

| | |
|--------------|---|
| SSTB-CV | Ford Crown Vic SecureStor vault mounting kit |
| SSTB-EXPD | Ford Expedition SecureStor vault mounting kit |
| SSTB-EXPD-EL | Ford Expedition EL SecureStor vault mounting kit |
| SSTB-EXPL | Ford Explorer SecureStor vault mounting kit |
| SSTB-SUB | Chevy Suburban SecureStor vault mounting kit |
| SSTB-SUB-3R | Chevy Suburban 3rd row SecureStor vault mounting kit |
| SSTB-TAH | Chevy Tahoe SecureStor vault mounting kit |
| SSTB-UL | Flat Floor SecureStor vault mounting kit |

rugged

Weapon Storage

SecureStor Locking Gun Vaults



LGV-1540
shown with standard foam insert



LGV-1636
shown with optional custom insert.



Both feature a lift-off lid

SS-LGV-1540

Aluminum weapon storage box features a lift-off lid, ventilation holes, electronic combination lock, easy grip handles and foam liner.

Optional pick-and-pull insert (call for details)
40"W x 15"D x 7"H

also available:

SS-LGV-1636

36"W x 16"D x 7"H



Both feature an
electronic combination lock



Flashers



AT-300 & 400 Flashers

Lund's AT-300* Alternating Headlight Flasher is designed to flash lamp loads up to 15 amps. per side at 120 flashes per minute. It's 2-wire headlight hook-up allows easy and fast installation in most vehicles.

The AT-400* Flashback is designed to alternately flash a vehicle's brake and back-up lights. Normal operation of the brake and back-up lights is automatic and overrides the flasher. All electronic transmission diodes are incorporated into the flasher.



AT-500, 600, 700, 1000, 1100 & 1200 Flashers

AT-500* Ground Side Alternating Headlight Flasher is designed to flash lamp loads up to 15 amps per side at 120 flashes per minute. This flasher is used on most foreign vehicles and some domestic vehicles with ground side switching of the headlights. It's 2-wire headlight hook-up allows easy installation in most applications.

AT-600* Alternating Headlight Flasher is completely solid state. This flasher is designed to flash lamp loads up to 15 amps per side at 120 Flashes per minute and features low current switching.

AT-700* Flashback is completely solid state and designed to alternately flash a vehicles brake, back-up and auxiliary deck lights. This flasher has override of flash functions

with normal brake and back-up operation. It meets all current requirements for Shift lock interface, electronic transmissions and non flashing third brake light.

AT-1000* Solid state ground side switched alternating headlight flasher that is DRL compatible

AT-1100* Solid state alternating headlight flasher that is DRL compatible

AT-1200* Solid state isolation headlight flasher

**Flashers are potted for water resistance, and allow placement under the hood.*

SFGH-100SC Siren System

functionality



SFGH-100SC

Full function 100 watt siren incorporating an electronic alternating headlight flasher and a brake back-up light flasher in the same package. The SFGH-100SC is designed for undercover use where a full function siren with public address is needed.

The control head is only 3.5" L x 1.5" W x 1" H and very easy to conceal. The small

electronics module is easily located in the trunk and cables are then routed to the front of the vehicle. The SFGH-100 siren draws no battery current unless a siren function is activated.

The unit turns on and off with the vehicle's ignition switch. The user simply activates the desired function from the control head. Which include flashing headlights, flashing brake/back-up lights, radio rebroadcast, wail, yelp, public address and air horn. An indicator shows when either flasher is on.

The volume knob provides control of both Public Address and Radio Rebroadcast volume. Public



Address and air horn override siren functions at all times. Switch outputs can be used to control external strobe power packs and lights, (500ma max per output). The siren system is equipped with connectors that make installation quick, easy and very reliable, all with a minimum of technical knowledge. The electronics module has quick connect plugs for the control and power cable assemblies.

Power Distribution



CT-60 PDC

A fully resettable power distribution center (PDC). For automotive fleet's, especially emergency vehicles, the CT-60 provides after market equipment circuit protection from one location within the vehicle.

The CT-60's circuit breakers are aircraft quality for reliability, easy to operate, and consist of a main breaker with six branch breakers. The 60 amp main circuit breaker has service disconnect (Pull-Off, Push-On). This allows for complete control from one button. Six branch breakers, having capacities from 10 to 20 amps, can be used independently or

bussed together. All breakers in the CT-60 have an indicator band to quickly identify which breaker has tripped. All breakers are Trip Free ie: holding the button down does Not prevent the breaker from operating. Main lead-in protection is provided thru the use of a weatherproof 80 amp manual reset circuit breaker. Two fused outputs are rated up to 12 amps each. Terminations are on two terminal strips at the rear. The CT-60 is fully enclosed for mounting in the passenger compartment or trunk.

Installation Accessories

AOI Airbag Switch



The AOI Airbag control switch allows the driver or passenger to turn the airbag on and off. The use of AOI's PulseFire Fuse technology eliminates any question of switch position at the time of impact. A false claim is virtually impossible.

The new US-2/FLM and US-2/GM Dual

igniter switches plug directly into the harness of most Ford, Dodge or General Motors vehicles. Installation is easy, non-invasive and the manufacturers' warranty is unaffected.

See price guide for application information.

Side Curtain Airbag Switches

Control deployment of side curtain airbags which are becoming standard equipment on more vehicles. They are an important consideration for prisoner cages and side window mounted equipment.

See price guide for application information.

CG-X ChargeGuard Formerly CG-MP

The ChargeGuard® automatic timer switch extends vehicle battery life by preventing excessive discharge. The unit adds the convenience of turning your equipment or computer on and off. The switch's built-in sensors automatically turn equipment on when the engine is started, and equipment will stay on for a pre-programmed amount of time when the engine is turned off. The ChargeGuard® switch installs quickly and easily with a variety of sensing options including under / over voltage and comes complete, ready to install.



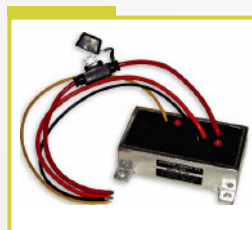
Secure Idle Ignition override

With the vehicle in "Park", push the button on the dashboard activating the Secure-Idle system. Turn the ignition off and remove the key. Secure-Idle allows the vehicle's engine to continue running providing power for vehicle and emergency equipment. Unit is deactivated by stepping on the brake or moving the gear selector.



BB-4

Battery Brain ensures that enough charge remains in your battery to start your car's engine. If there is excessive current drain on your battery, Battery Brain disconnects the battery from your vehicle's electrical system. To reconnect, a dash mounted push button switch reconnects the battery.



CEPT-30 PowerTamer

Time Out Timer. Offers 15 minute to 16 hour, programmable battery saver. 3 Milliamp standby current, solid state 30 amp service. Automatic over and under voltage sensing protection. 16.5 Volt over voltage protection. Compact, Self-Contained, *Water Resistant construction mounts anywhere.*

AZ-12 Anti-Zap

Anti-Zap is a specialized version of the surge suppressor used in homes and offices to protect electronic equipment and other electrical appliances. When the Anti-Zap is connected to your vehicles battery, it becomes part of the electrical system. As voltage spikes pass through the AZ-12 they are immediately "clipped" to a level safe for the vehicle's electronics, thus preventing damage to Computers, Docking Stations, Modems and other mobile electronics in your vehicle.



versatility



LUND
INDUSTRIES
Emergency Vehicle Solutions



847-459-1460
 800-504-1460 *toll free*
 847-714-9443 *fax*

Lund Industries, Inc.
 3175 MacArthur Blvd.
 Northbrook, IL 60062

Product or "will it fit" questions email:
sales@lund-industries.com

To order or for order status email:
orders@lund-industries.com

web site:
www.lund-industries.com